



Service Bulletin

Bulletin Number: SA - 021623

Release Date: 3/10/23

Effective Date: Upon Release

Supersedes: Bulletin Dated 02/16/2023

Ride Manufacturer	Fun Spot Manufacturing
Ride Name	Sweeper (formerly Wipeout)
Affected Production Date	All
Affected Serial Numbers	All
Time Frame for Changes	30 Days

Abstract of Issue

Fun Spot Manufacturing, LLC encourages patrons to avoid making contact with the rotating arm(s), whether solid or inflated. Patrons should actively jump over or duck under the rotating arm while staying within their designated trampoline bed in order to avoid contact with the arm(s) and other patrons.

Reason for Release

Fun Spot Manufacturing, LLC has received and evaluated recent feedback from some Owner Operators and is making recommendations regarding operation. These recommendations are intended to improve Patrons' ability to athletically interact

Actions to be Taken

1. Utilize only one speed
2. Only rotate in a single direction
3. Limit Session time
4. Prevent back-to-back play
5. Operate within guidance of Operations Manual
6. Utilize outer 5' sections of trampoline beds
7. Properly mark delineation line for outer 5' sections
8. Update all signage to match updated requirements
9. Close attraction until all modifications are made and training conducted.

Details of Additional Requirements:

1. Speed Control - Sweeper units are currently equipped with speed controls that allow for multiple speeds/RPM of the rotating arm(s). These speeds can range from 1/2 RPM to a capped speed 10 RPM. As noted in the Sweeper Operations Manual, unannounced and/or unexpected changes in speed can impact Patrons' timing, coordination, and ability to effectively avoid contact with the device arms. Henceforth, all units will operate at a reduced speed of 4 RPM. (Equates to a reading of 5.0 on Allen Bradley controller).
2. Spin Direction - Sweeper units are currently equipped with controls that allow the operator to change the direction of on the rotating arm(s) at any time. As noted in the Sweeper Operations Manual, unannounced and/or unexpected changes in arm travel direction can impact Patrons' timing, coordination, and ability to effectively avoid contact with the rotating arm(s). Henceforth, all units will only travel in a single direction during operation.
3. Limit length of session to 2 minutes.
4. Patrons not allowed back-to-back consecutive play.
5. Operate attraction within guidance of Fun Spot Operations Manual.
6. Operate attraction only allowing patrons to use the outer 5 foot of the trampoline beds for Sweeper/Wipeout with more than 4 trampolines.
7. 5-foot trampoline bed jumping area to be marked on all Sweeper/Wipeouts with more than 4 trampolines.
8. Signage added to attraction to instruct patrons to jump behind the line designating the 5 foot boundary.
9. Close the attraction until operators have made these modifications and operational training is completed.

If you have any questions or need additional assistance in making the above adjustments, contact Fun Spot LLC Maintenance Department 706-376-8989 (ext. 233) or contact michael.segars@funspot.com

Supplemental Instructions on the Operator Console Modifications

Tools Required for making above changes in the Operator Console module:

- 1/8" Allen Wrench
- Small Flat Head Screwdriver
- Small Phillips Head Screwdriver
- Small Wire Cap (orange)

Location of Speed Potentiometer, Direction Control Switch, and Allen-Bradley Controller

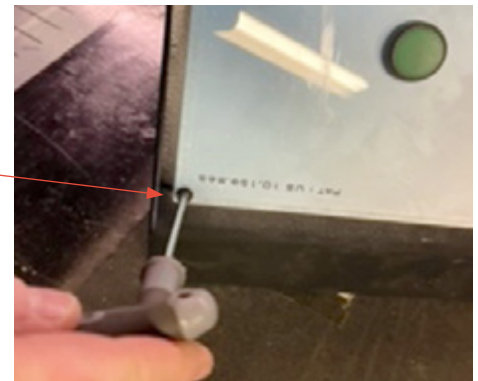
Speed Adjustment Knob (Potentiometer) and Direction Control Switch are both located on the top of Operator Control Box. The top cover of Operator Control Box will need to be removed (4 screws) and flipped over to access the switches. The Allen Bradley controller is located inside the Operator Control Box and you will need a visual to the Allen Bradley display when making adjustments to the Speed Potentiometer.

CAUTION - System operates on a 24V power source. Power will need to remain on to make proper potentiometer adjustments.

PART 1 SPEED CONTROL ADJUSTMENTS

STEP 1 Remove panel

Remove top panel of Operator Control Module by using a 1/8" Allen Wrench to remove the 8 screws from panel cover.



STEP 2 Loosen retaining ring & adjustment knob

Locate the SPEED Adjustment knob (potentiometer). At the base of the knob is a black/white plastic ring that secure adjustment knob in place. Remove this ring by turning ring CCW. Once removed, the adjustment knob can be easily be removed for access to the adjustment screw.



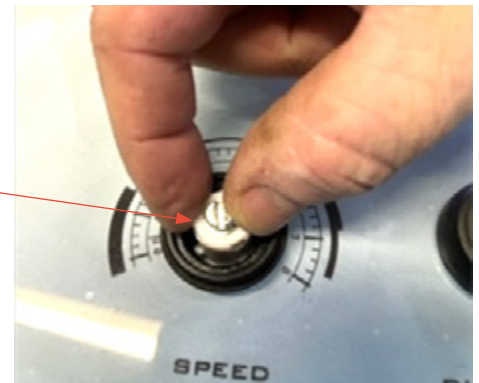
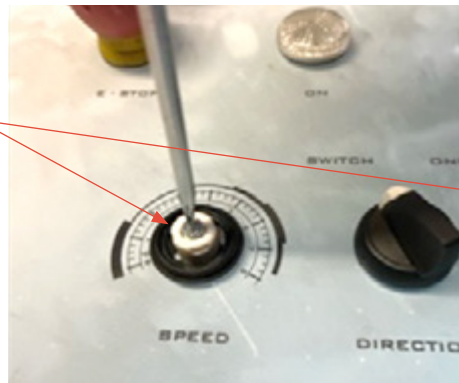
If you have any questions or need additional assistance in making the above adjustments, contact Fun Spot LLC Maintenance Department 706-376-8989 (ext. 233) or contact michael.segars@funspot.com

Supplemental Instructions on the Operator Console Modifications

PART 1 SPEED CONTROL ADJUSTMENTS continued

STEP 3 Access adjustment screw

With a small flat-head screw driver, loosen the inner part of adjustment dial and remove the white Speed Pod Clamp.

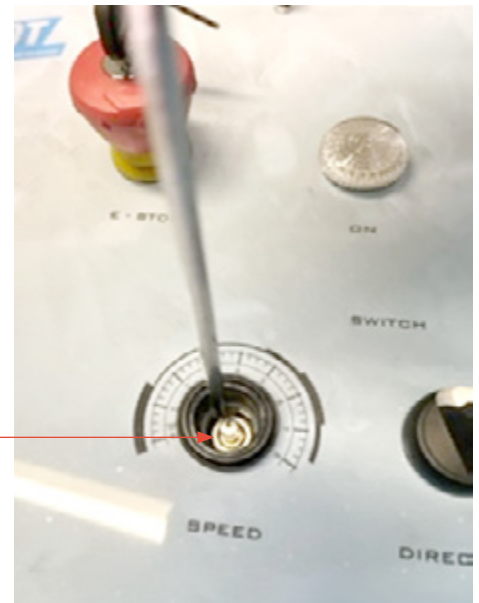


STEP 4 Make speed control adjustments

Note: Power must be "ON" for this adjustment and you will need to visually see Allen Bradley Controller display located inside Operator Console.

At current setting, with the speed pod turned fully clock-wise, the display will read (~9.9 - 10.1) speed value.

Making the adjustment: With Speed Pod Clamp removed you have access to the Speed Pod Adjustment Control. Using a small flat-head screwdriver, turn the dial CCW to reduce the speed to a value of (~4.9-5.0) on the AB Controller. Controller adjustments are sensitive and getting it to lock precisely at 5.0 may be difficult)



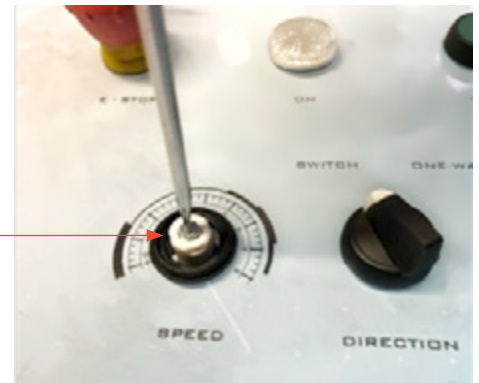
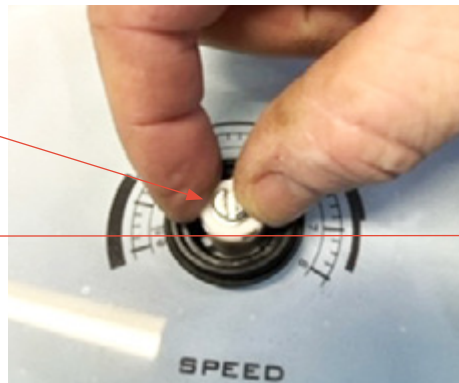
If you have any questions or need additional assistance in making the above adjustments, contact Fun Spot LLC Maintenance Department 706-376-8989 (ext. 233) or contact michael.segars@funspot.com

Supplemental Instructions on the Operator Console Modifications

PART 1 SPEED CONTROL ADJUSTMENTS continued

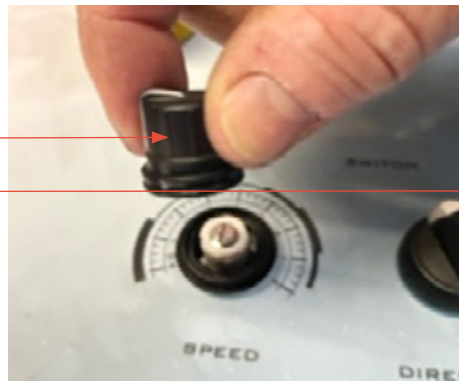
STEP 5 Reassembly of Speed Pod Clamp

Re-install Speed Pod Clamp over speed pod dial, turn SP Clamp clock-wise until it stops. Once it stops use flat-head screwdriver to tighten the SP Clamp down securing it to Speed Pod Switch.



STEP 6 Reassembly of Adjustment Knob

By tightening the SP Clamp, it will have the switch working again. Lastly, place the Speed Adjustment Knob back on with indicator line showing at maximum speed.



After adjustments, verify all features work properly before putting Sweeper into operation.

Spin Direction Adjustment instructions begin on next page

If you have any questions or need additional assistance in making the above adjustments, contact Fun Spot LLC Maintenance Department 706-376-8989 (ext. 233) or contact michael.segars@funspot.com

Supplemental Instructions on the Operator Console Modifications

PART 2 SPIN DIRECTION ADJUSTMENTS

STEP 1 Remove Panel

On the top cover of the Operator Control module, the Direction Switch is located to the right of the Speed Dial and is labeled "DIRECTION".

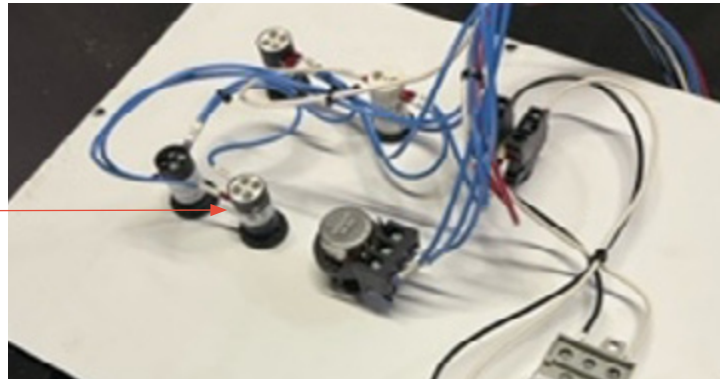
For Top Panel removal, follow the instructions



STEP 2 Access to Direction Switch

Note: Power should be "OFF" for this procedure.

With Top Panel removed, flip it over to gain access to the backside of Direction Switch.



STEP 3 Disconnect Direction Switch

Two wires run into the Direction Switch (#24 & 24a). Using a small flat-head screwdriver, loosen the terminal for wire marked #24a.



If you have any questions or need additional assistance in making the above adjustments, contact Fun Spot LLC Maintenance Department 706-376-8989 (ext. 233) or contact michael.segars@funspot.com

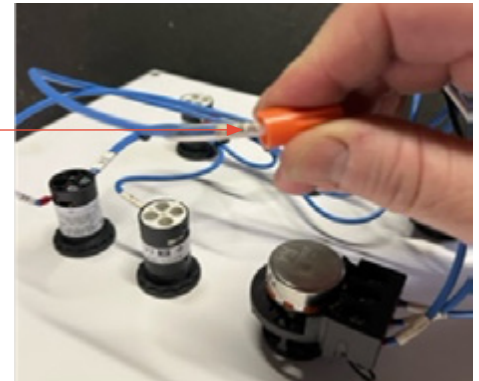
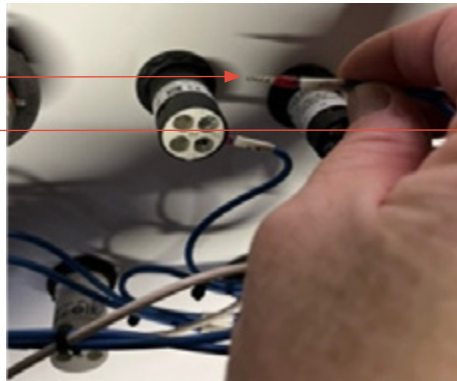
Supplemental Instructions on the Operator Console Modifications

PART 2 SPIN DIRECTION ADJUSTMENTS continued

STEP 4 Properly seal exposed wire

Pull wire out from switch and install a small wire nut (blue or orange) and tighten to secure cap to wire. This will prevent any bare wires from coming in contact with other wire connections.

Direction switch is no longer functional.



STEP 5 Reinstall Top Control Panel

Flip panel over and reinsert the 8 - 1/8" allen screws to properly secure Top Control Panel to the Operator Control Console.



After adjustments, verify all features work properly before putting Sweeper into operation.

If you have any questions or need additional assistance in making the above adjustments, contact Fun Spot LLC Maintenance Department 706-376-8989 (ext. 233) or contact michael.segars@funspot.com